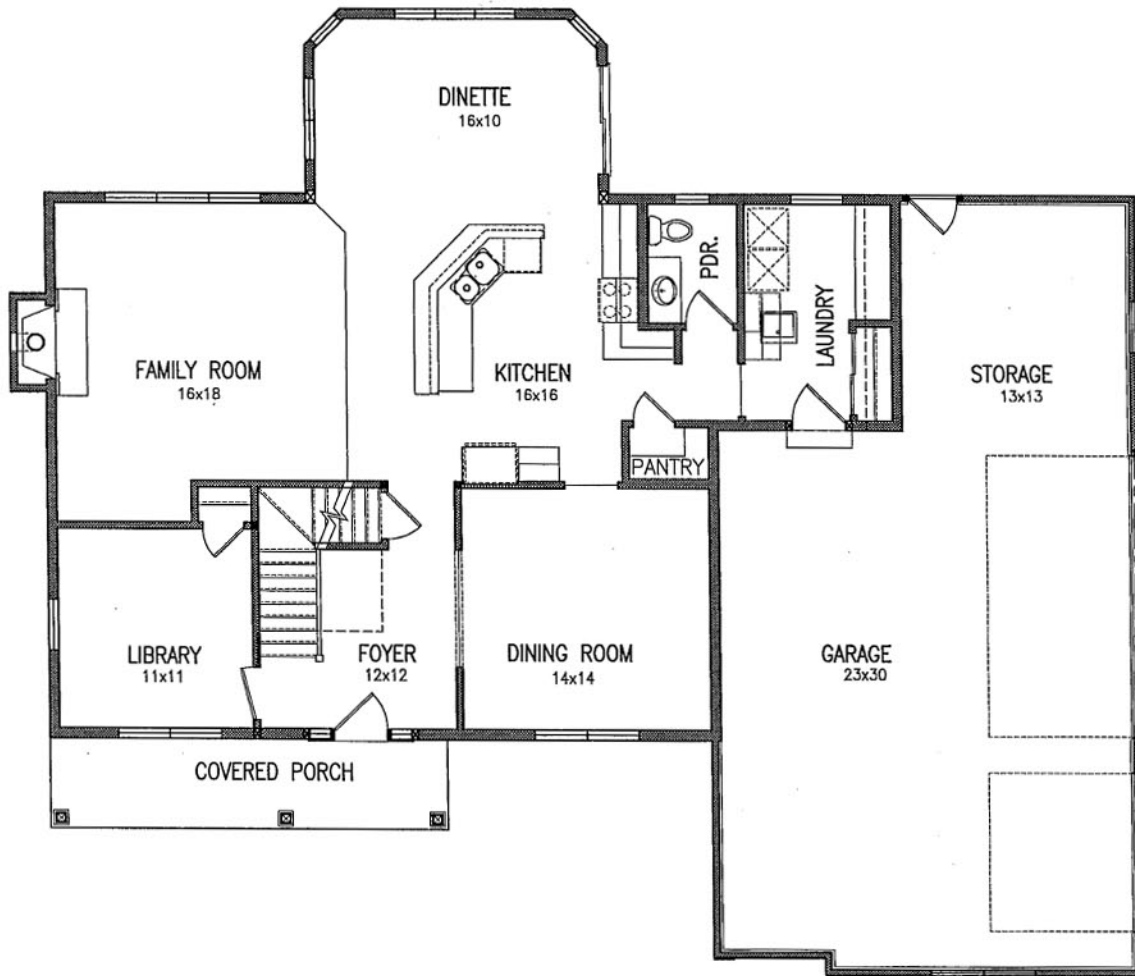


GEORGETOWN

James Craig BUILDERS



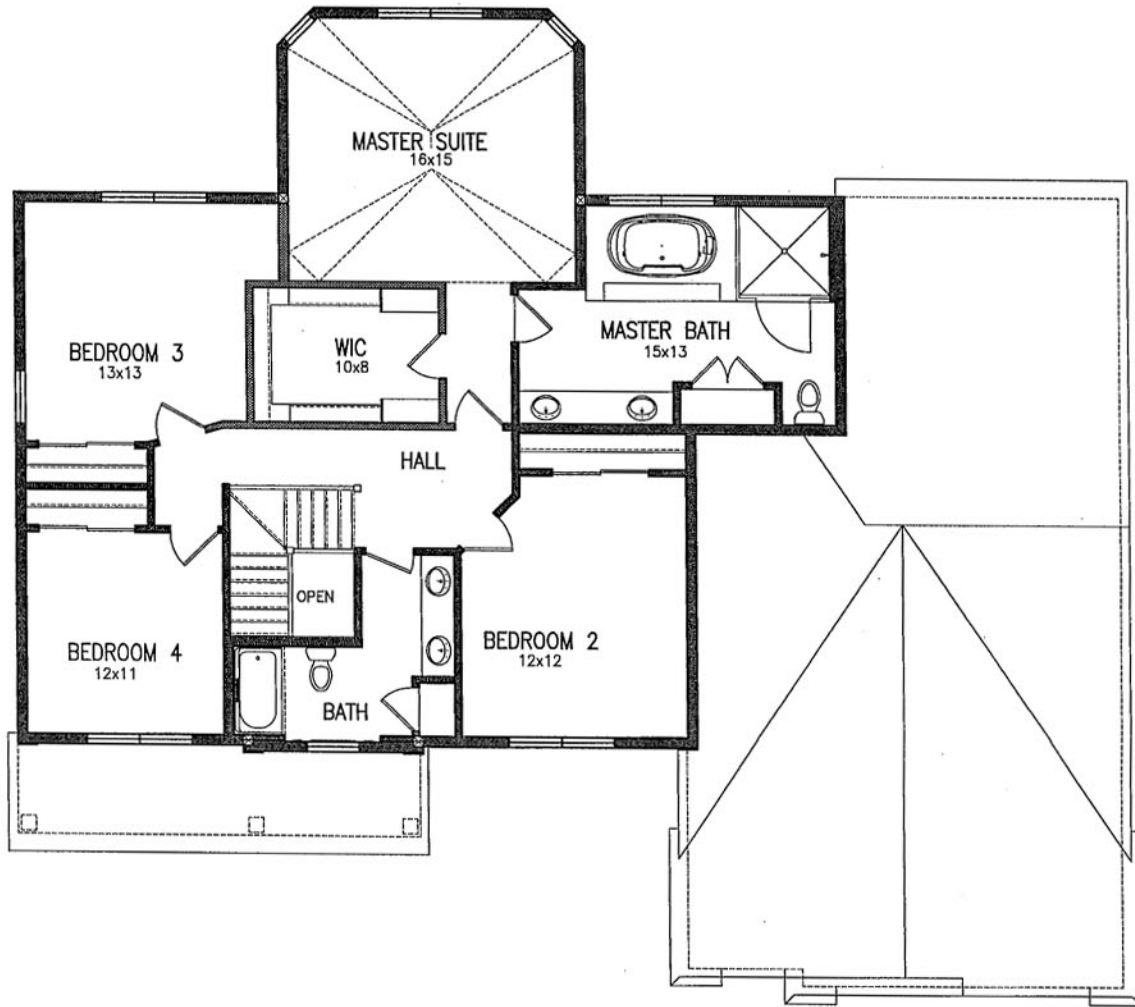
FIRST FLOOR PLAN CEILING 9'-0"
FIRST FLOOR 1,480 Sq Ft
SECOND FLOOR 1,330 Sq Ft
TOTAL = 2,810 Sq Ft

Phone: 414-771-5563

© Copyright 2007-2008 James Craig Builders, Inc. All rights reserved.

GEORGETOWN

James Craig BUILDERS



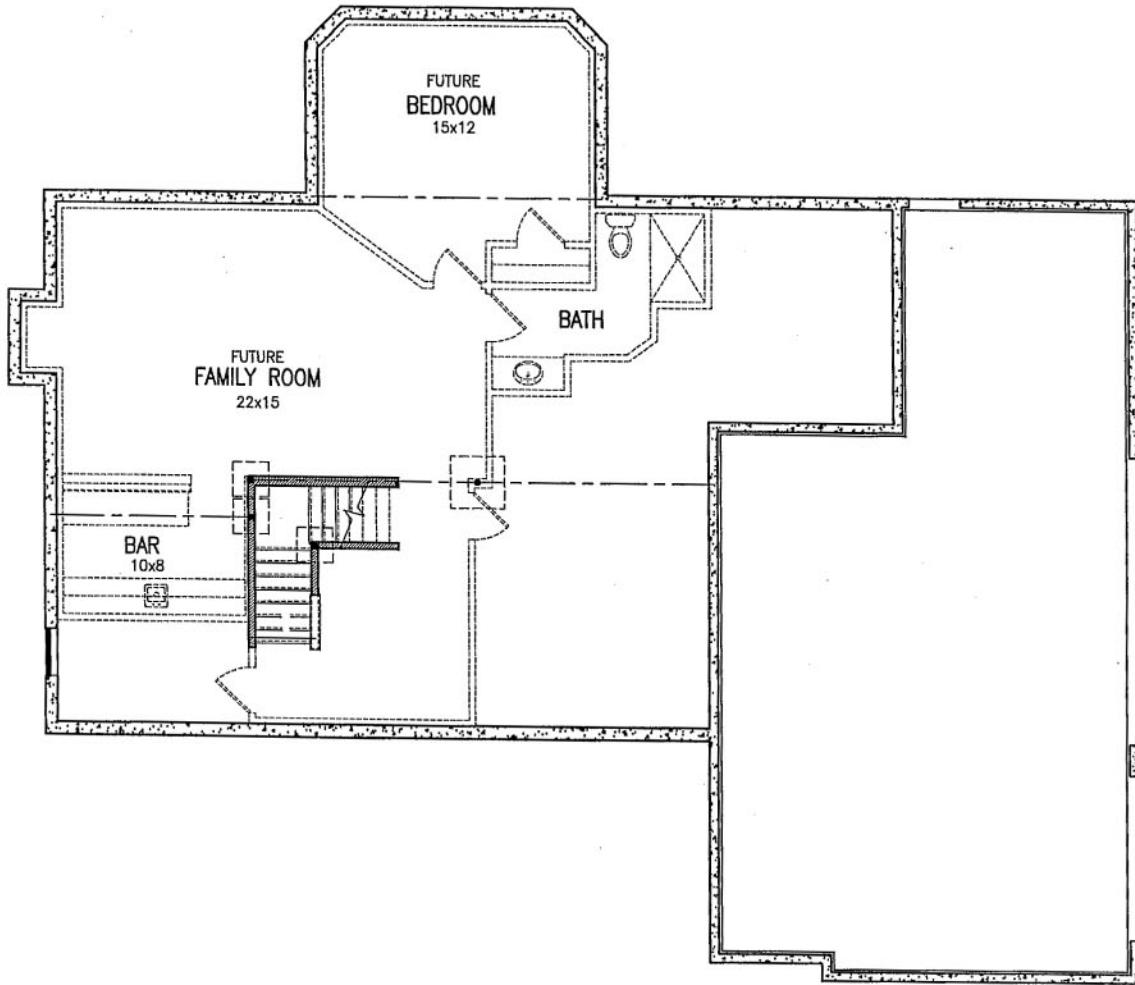
SECOND FLOOR PLAN
1,330 Sq Ft

Phone: 414-771-5563

© Copyright 2007-2008 James Craig Builders, Inc. All rights reserved.

GEORGETOWN

James Craig BUILDERS



LOWER LEVEL PLAN